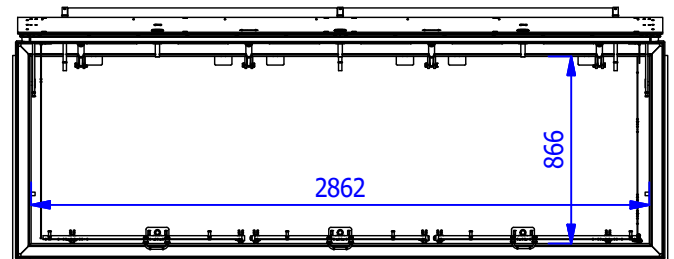
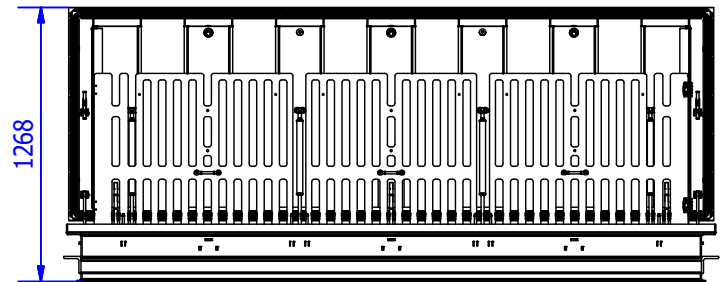
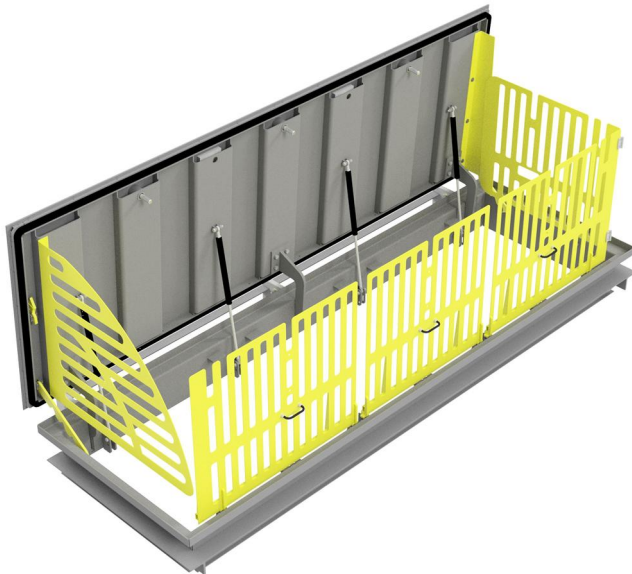


Access covers

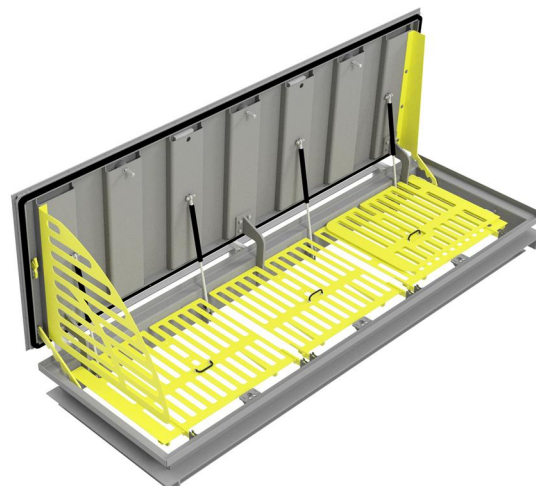
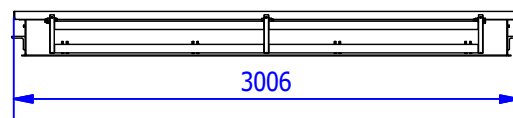
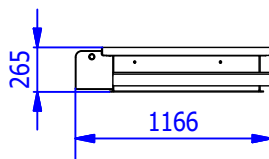
TECHNICAL DATACARD

ENTRY ACCESS 2862x866



WIDTH	LENGTH	HEIGHT	ESTIMATED WEIGHT	FREE WIDE PASS
1166 mm.	3006 mm.	265 mm.	587 Kg.	2862x866 mm.
WATERTIGHT.				
MADE OF CARBON STEEL S275JR/1.0044 AND TREATMENT ZINC Cr III + SEALED / CORROSION CATEGORY C4.				
SAFETY LOCK SCREW ALUMINUM BRONZE.				
COVER CONSISTS OF A STEEL TEAR PLATE WITH SLIP RESISTANCE				
ADDITIONAL HELP FOR OPENING AND CLOSING BY A GAS ASSISTED SPRING DAMPERS.				
SECURITY SYSTEM WITH INTEGRATED ARRESTOR (INCORPORATED).				
OPTIONS:				
ATTACK-PROOF (SAFETY LOCK).				
CARBON STEEL MADE AND PAINTED EPOXY				
SAFETY GUARD / ANTIFALL GUARD.				
ADAPTED TO CUSTOMERS REQUEST. (LOGOS AND DISTINCTIVE)				

(*) DESIGNED AND MANUFACTURED ACCORDING TO STANDARD UNE EN 124 (NOT CERTIFIED).



Approx. weight 587 kg.