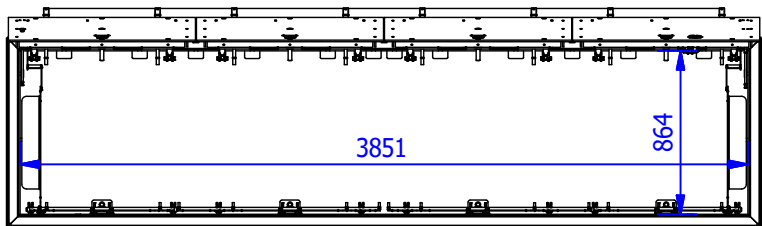
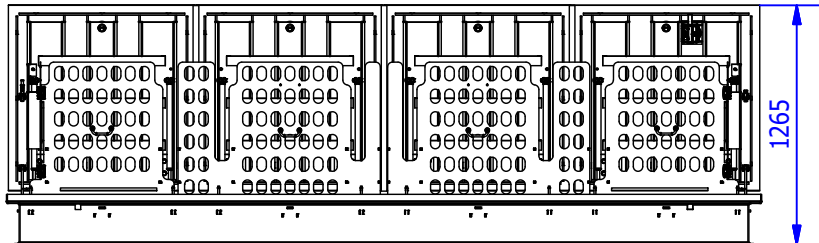
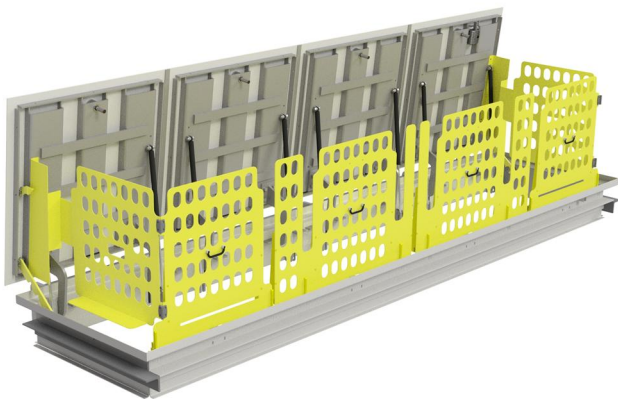
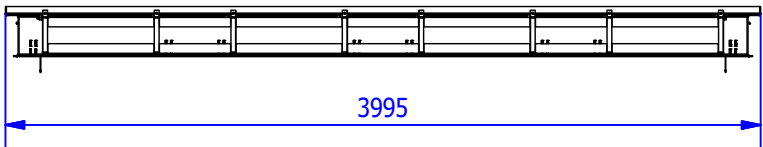
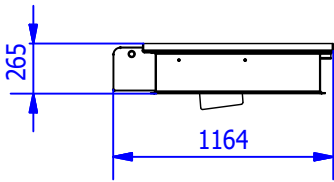


TECHNICAL DATACARD
MODULAR COVER 1000 - 4 MODULES



WIDTH	LENGTH	HEIGHT	ESTIMATED WEIGHT	FREE WIDE PASS
1164 mm.	3995 mm.	265 mm.	925 Kg.	3851x864 mm.
NO WATERTIGHT.				
MADE OF CARBON STEEL S275JR/1.0044 AND TREATMENT ZINC Cr III + SEALED / CORROSION CATEGORY C4.				
SAFETY LOCK SCREW ALUMINIUM BRONZE / WITH SAFETY KEY SPECIAL.				
COVER CONSISTS OF A STEEL TEAR PLATE WITH SLIP RESISTANCE				
ADDITIONAL HELP FOR OPENING AND CLOSING BY A GAS ASSISTED SPRING DAMPERS.				
SECURITY SYSTEM WITH INTEGRATED ARRESTOR (INCORPORATED).				
OPTIONS:				
ATTACK-PROOF (SAFETY LOCK).				
CARBON STEEL MADE AND PAINTED EPOXY.				
SAFETY GUARD / ANTIFALL GUARD.				
ADAPTED TO CUSTOMERS REQUEST. (LOGOS AND DISTINCTIVE)				

(*) DESIGNED AND MANUFACTURED ACCORDING TO STANDARD UNE EN 124 (NOT CERTIFIED).



Approx. weight 925 kg.