

BARESLAN, S.L. Unipersonal Access Covers

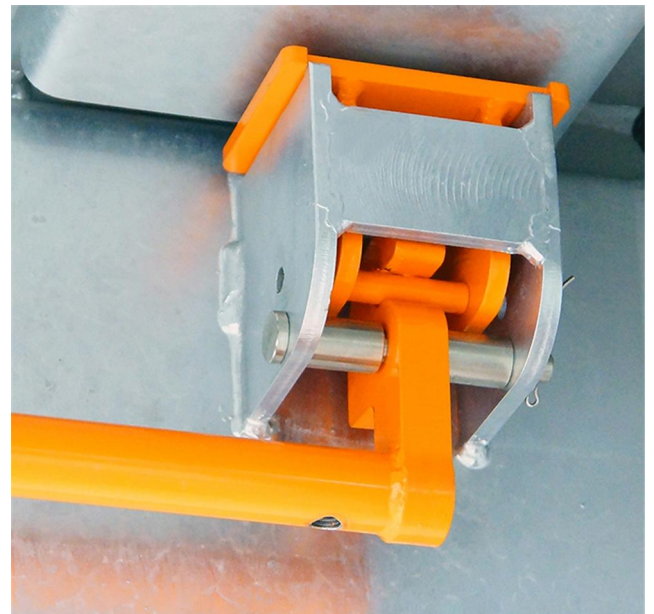
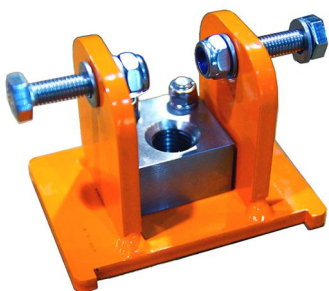
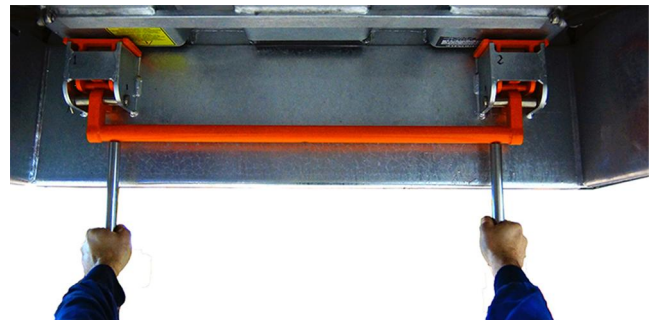
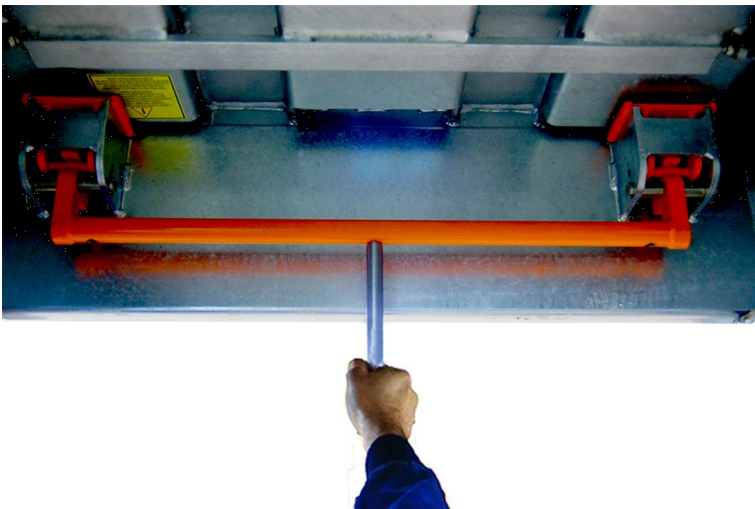
INDOOR (INSIDE) OPENING SYSTEM.

In order to provide an easy and quick opening system as an optional and safety element, our covers can incorporate a new indoor (inside) opening system.

This opening system is equipped with one or two levers that activate the internal opening bar until the emergency closing is opened. In this way the **BLOCKS WAD SCREW** are unlocked where the screws of the cover are screwed, unlocking the cover easily and immediately from the inside, though externally they are closed by screws.

This opening system can be incorporated into the **1000x1000, 800x800, 780x1180 y 600x1300 models.**

With a simple change of the **BLOCKS WAD SCREW** we managed to revert an Inside-Outside Opening Cover-Top to an only Outside Opening Top.



Much faster, safer and easier to handle (manage).

BARESLAN S.L. Unipersonal & AUSPOLA S. COOP

Access covers

ACCESS COVER 600 x 1300 CLASS B125/D-400
ACCESS COVER 800 x 800 CLASS B-125/D-400
ACCESS COVER 1000 x 1000 CLASS D-400
ACCESS COVER 780 x 1180 CLASS D-400
ENTRY ACCESS COVER "A" 800 x 800 CLASS B-125

Rev.01 09 / 21

INSIDE OPENING (emergency opening)

- Pull the lever or levers that activate the inside opening bar until the emergency lock opens. This unlocks the **WAD SCREW BLOCKS** where the screws of the cover are screwed.
- Once the opening has been activated from the inside, the cover will be raised to vertical position, at the moment that the safety lever is locked into the open position, it will be completely safe to manipulate (handle) the Cover-top.

SYSTEM RESET (only possible from outside)

IMPORTANT: The reset is necessary if the cover is opened from the inside. If it is opened from the outside a rearm (reset) is not necessary.

The first step is the unscrewing of the **BLOCKS WAD SCREWS** which. When the cover-top is opened, they joined to the opening screws.

- Place the **BLOCKS WAD SCREWS** in their housing and position in the screw bases located in the frame, capturing the axes of the screw blocks at same time with the **CLOSURE HOOKS** of the bar.
- **VERY IMPORTANT!!** Unlock the safety system lever, positioning it on the trigger and overcome the force of the **GAS SPRINGS** to close the cover-top. Once the cover-top is horizontal, the screws must be fixed to leave the cover-top closed.
- Closing the cover-top is only possible from the outside.
- Tighten the triangular head locking screws. Through the wrench, tighten until both screws are fully threaded and counter-tighten another quarter turn, being this the only way to validate the tightness of the cover.

- PREVENTIVE MAINTENANCE MUST BE CARRIED OUT BY QUALIFIED STAFF.
(SEE THE MANUAL FOR PERIODIC PREVENTIVE MAINTENANCE).

BARESLAN S.L. Unipersonal & AUSPOLA S.COOP

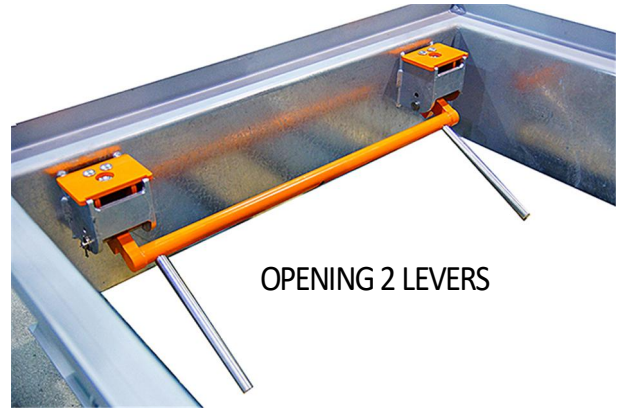
Access covers

ACCESS COVER 600 x 1300 CLASS B125/D-400
ACCESS COVER 800 x 800 CLASS B-125/D-400
ACCESS COVER 1000 x 1000 CLASS D-400
ACCESS COVER 780 x 1180 CLASS D-400
ENTRY ACCESS COVER "A" 800 x 800 CLASS B-125

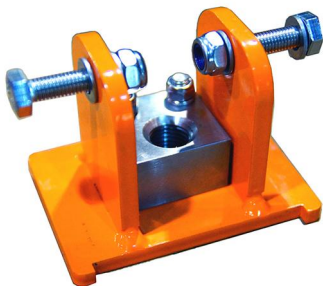
Rev.01 09 / 21



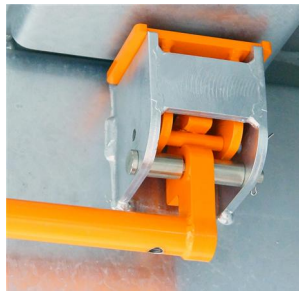
OPENING ONLY 1 LEVER



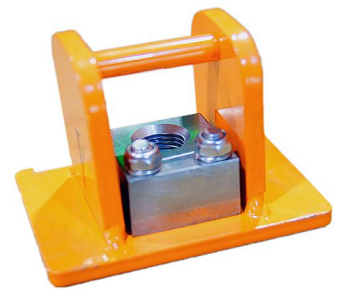
OPENING 2 LEVERS



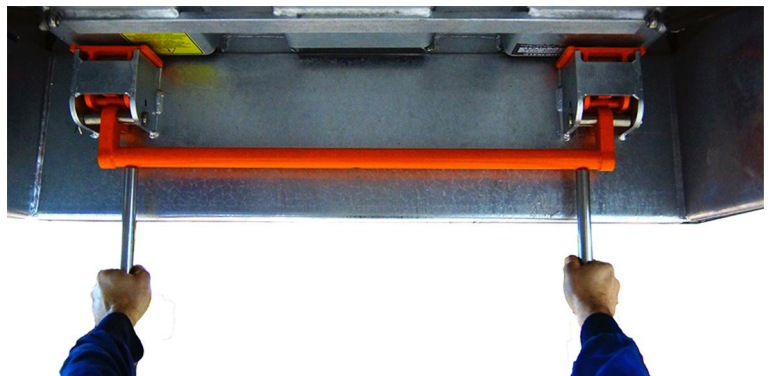
BLOCK WAD FIXED SCREW



SET OF CLOSURE HOOKS



LOCK BLOCK SCREW INSIDE
OPENING



WITH A SIMPLE CHANGE OF THE BLOCKS WAD SCREWS WE CAN REVERSE AN INSIDE-OUTSIDE OPENING COVER INTO AN ONLY OUTSIDE OPENING COVER.