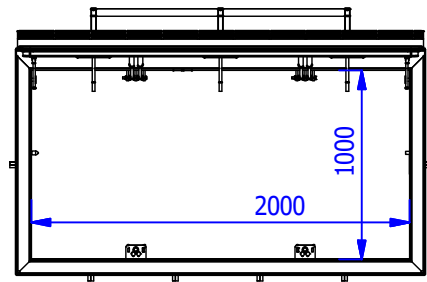
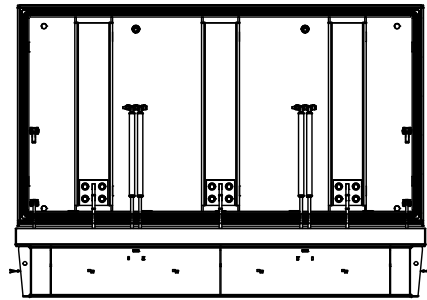


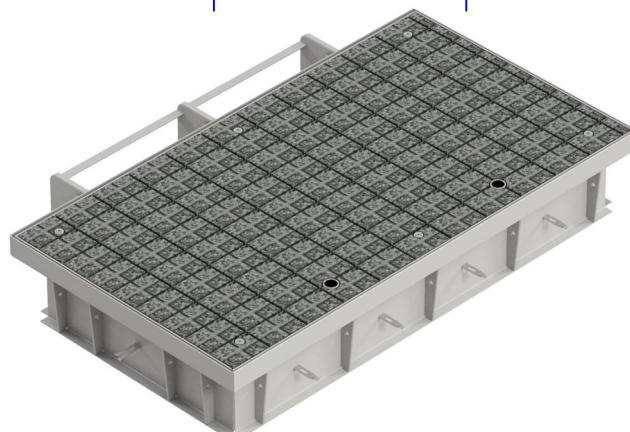
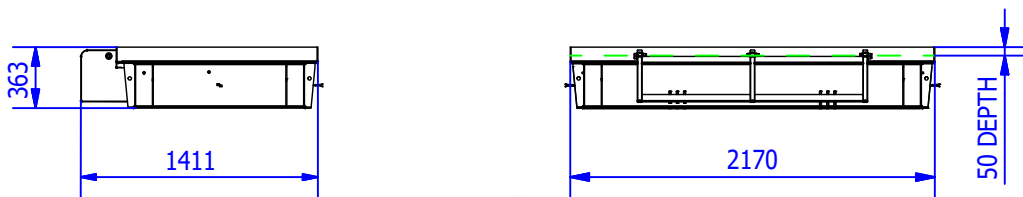
Access covers

TECHNICAL DATACARD

COVER CP 2000 x 1000 REFILLABLE



WIDTH	LENGTH	HEIGHT	ESTIMATED WEIGHT (*)	FREE WIDE PASS
2170 mm	1411 mm	363 mm.	572 Kg	2000x1000 mm
TYPE C250 - UNE-EN 124 / WATERTIGHT. NOT CERTIFIED.				
MADE OF CARBON STEEL S275JR/1.0044 AND TREATMENT ZINC Cr III + SEALED / CORROSION CATEGORY C4.				
SAFETY LOCK SCREW ALUMINUM BRONZE / WITH SAFETY KEY SPECIAL.				
TOP TRAY COVER IN TRAY SHAPE, TO ADAPT TO DIFFERENT FINISHES IN THE INSTALLATION				
TRAY DEPTH FOR ITS FILLING APPROX. 50 MM.				
ADDITIONAL HELP FOR OPENING AND CLOSING BY GAS ASSISTED SPRING DAMPERS.				
SECURITY SYSTEM WITH INTEGRATED ARRESTOR (INCORPORATED).				
OPTIONS:				
ATTACK-PROOF (SAFETY LOCK).				
CARBON STEEL MADE AND PAINTED EPOXY .				
SAFETY GUARD / ANTIFALL GUARD.				
ADAPTED TO CUSTOMERS REQUEST. (LOGOS AND DISTINCTIVE)				



(*) Approx. weight 572 kg.
Depending on the filling

NOTE: FOR SAFETY AND FOR CORRECT OPERATION, THE UPPER TRAY MUST BE FILLED BEFORE OPENING