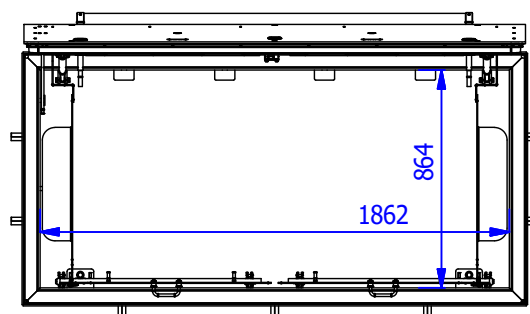
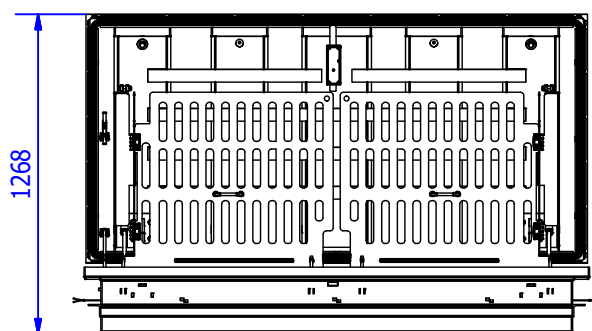
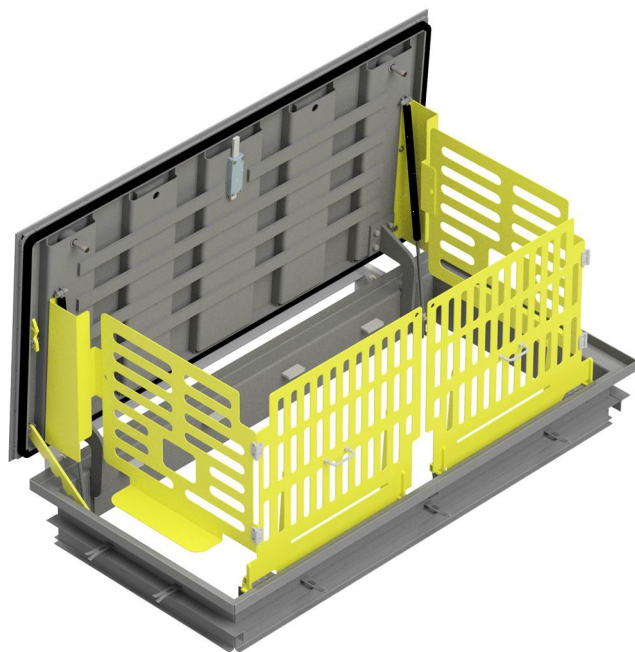


TECHNICAL DATACARD

ENTRY ACCESS 1862x864



WIDTH	LENGTH	HEIGHT	ESTIMATED WEIGHT	FREE WIDE PASS
1164 mm.	2006 mm.	265 mm.	348 Kg.	1862x864 mm.

WATERTIGHT.

MADE OF CARBON STEEL S275JR/1.0044 AND TREATMENT ZINC Cr III + SEALED. / CORROSION CATEGORY C4.

SAFETY LOCK SCREW ALUMINUM BRONZE / WITH SAFETY KEY SPECIAL.

COVER CONSISTS OF A STEEL TEAR PLATE WITH SLIP RESISTANCE

ADDITIONAL HELP FOR OPENING AND CLOSING BY A GAS ASSISTED SPRING DAMPERS.

SECURITY SYSTEM WITH INTEGRATED ARRESTOR (INCORPORATED).

OPTIONS:

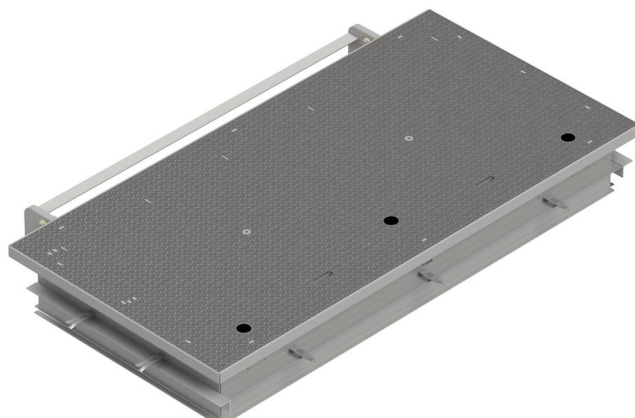
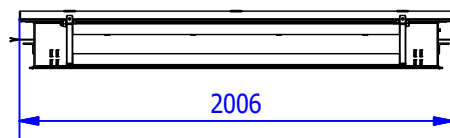
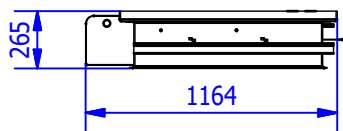
ATTACK-PROOF (SAFETY LOCK).

CARBON STEEL MADE AND PAINTED EPOXY.

SAFETY GUARD / ANTIFALL GUARD.

ADAPTED TO CUSTOMERS REQUEST. (LOGOS AND DISTINCTIVE)

(*) DESIGNED AND MANUFACTURED ACCORDING TO STANDARD UNE EN 124 (NOT CERTIFIED).



Approx. weight 348 Kg.