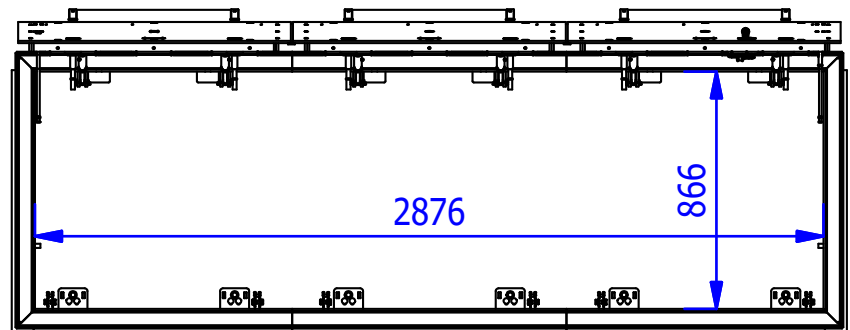
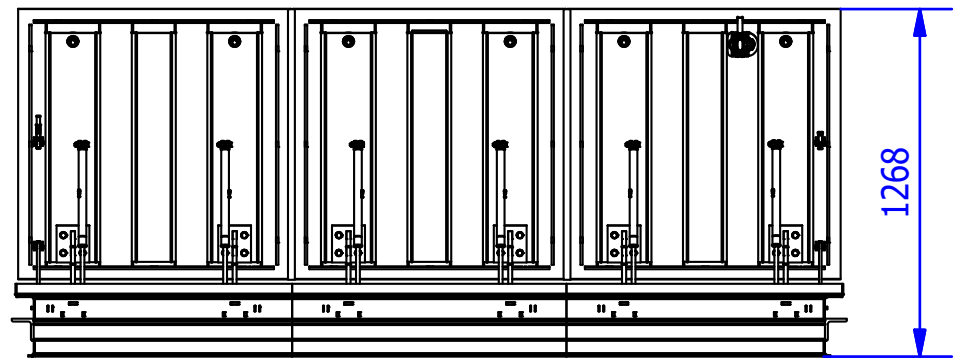
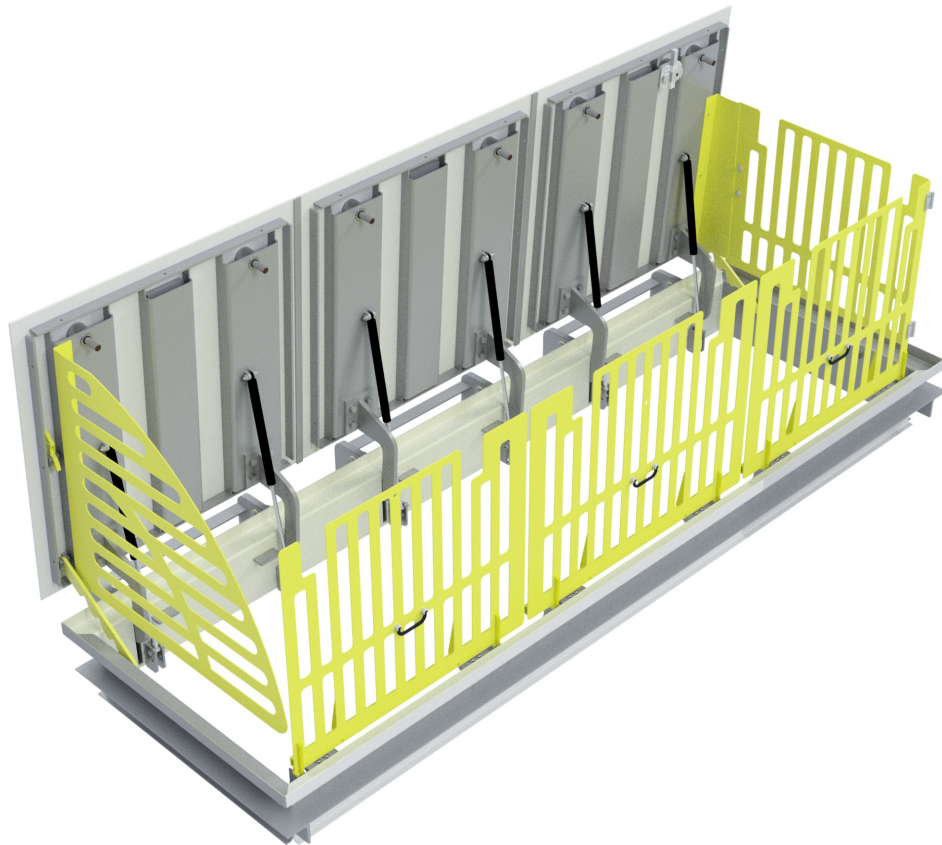


# BARESLAN, S.L. Unipersonal

## Access covers

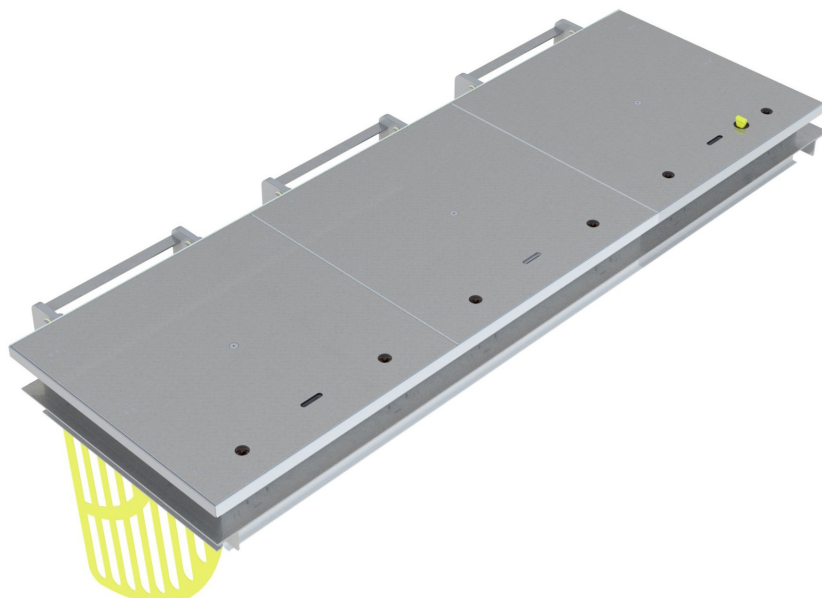
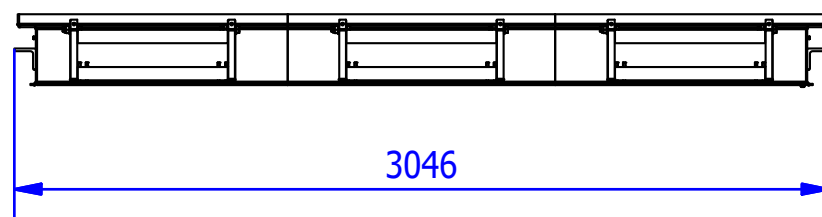
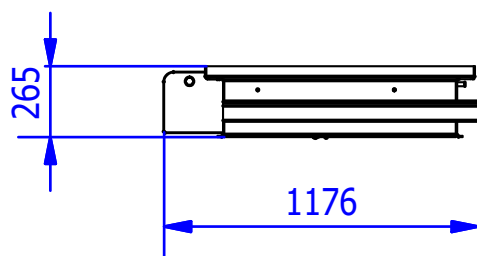
### TECHNICAL DATACARD

#### MODULAR COVER 1000 - 3 MODULES



WIDTH	LENGTH	HEIGHT	ESTIMATED WEIGHT	FREE WIDE PASS
1176 mm	3046 mm	265 mm	624 Kg	2876x866 mm
NO WATERTIGHT.				
MADE OF CARBON STEEL S275JR/1.0044 AND TREATMENT ZINC Cr III + SEALED/ CORROSION CATEGORY C4.				
SAFETY LOCK SCREW ALUMINUM BRONZE / WITH SAFETY KEY SPECIAL.				
COVER CONSISTS OF A STEEL TEAR PLATE WITH SLIP RESISTANCE				
ADDITIONAL HELP FOR OPENING AND CLOSING BY A GAS ASSISTED SPRING DAMPERS.				
SECURITY SYSTEM WITH INTEGRATED ARRESTOR (INCORPORATED).				
OPTIONS:				
ATTACK-PROOF (SAFETY LOCK).				
CARBON STEEL MADE AND PAINTED EPOXY.				
SAFETY GUARD / ANTIFALL GUARD.				
ADAPTED TO CUSTOMERS REQUEST. (LOGOS AND DISTINCTIVE)				

DESIGNED AND MANUFACTURED ACCORDING TO STANDARD UNE EN 124 (NOT CERTIFIED).



Approx. weight 624 kg.