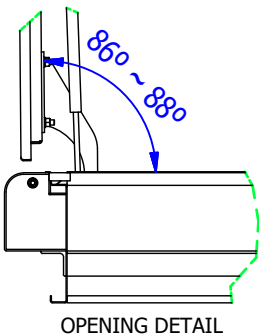
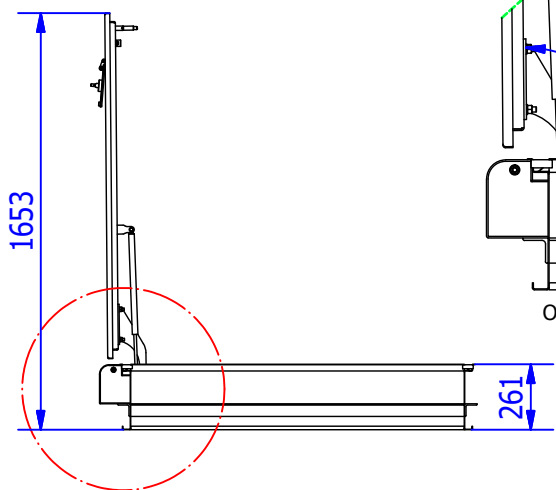
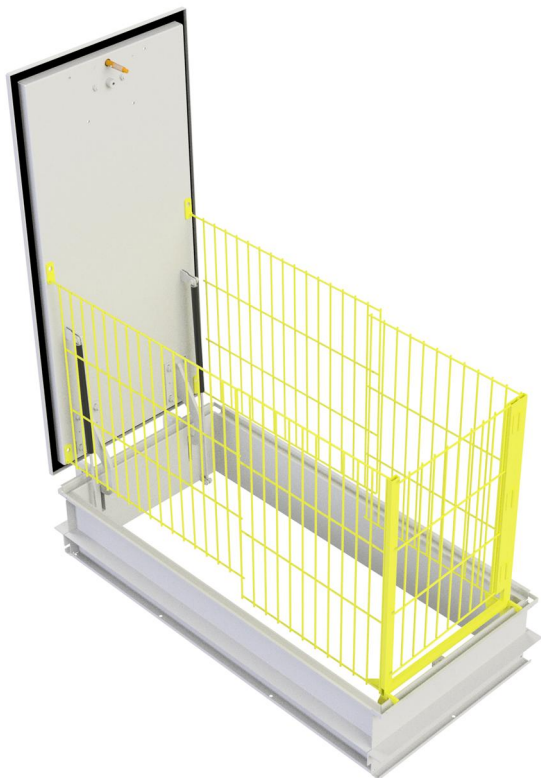
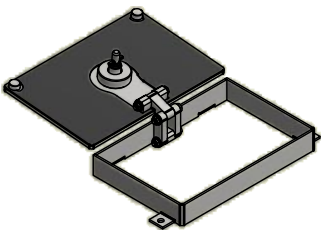
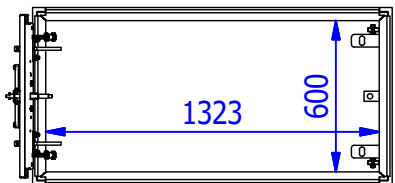


**TECHNICAL DATACARD**  
**MANHOLE ENTRY COVER MODEL "A" PADLOCK**  
**CLASS B125**

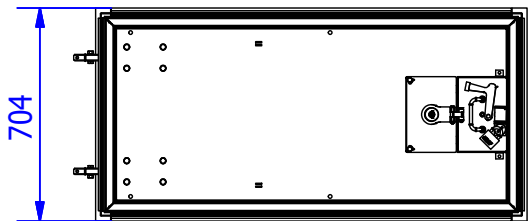
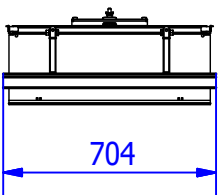
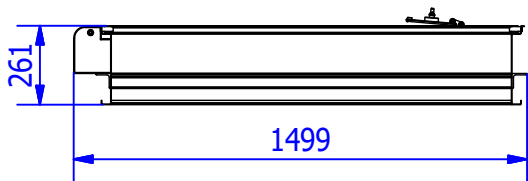


OPENING DETAIL



LOCK BOX DETAIL

WIDTH	LENGTH	HEIGHT	ESTIMATED WEIGHT GAL	FREE WIDE PASS
724 mm.	1499 mm.	261 mm.	125 Kg	600x1323 mm.
TYPE B125 - UNE-EN 124 / WATER-TIGHT.				
MADE OF CARBON STEEL S275JR/1.0044 AND TREATMENT ZINC Cr III + SEALED / CORROSION CATEGORY C4.				
SAFETY LOCK SCREW IN ALUMINUM BRONZE / WITH SPECIAL SAFETY KEY.				
LOCK BOX BUILT WITH DOUBLE LOCK SAFETY SYSTEM (PADLOCK NOT INCLUDED)				
ASSISTED OPENING AND CLOSING OF A GAS CUSHIONS.				
SAFETY GUARD / ANTIFALL GUARD WITH FRONT SIDE ACCESS DOOR, EPOXY PAINTED.				
TOP TRAY COVER TRAY MADE IN FORM, TO SUIT DIFFERENT FINISHES IN YOUR INSTALLATION.				



Approx. weight 125 kg.

**NOTE: FOR SAFETY AND FOR CORRECT FUNCTIONING PRIOR TO APERTURE MUST BE FILLED UPPER TRAY.**